



## **Compatibility Notes**

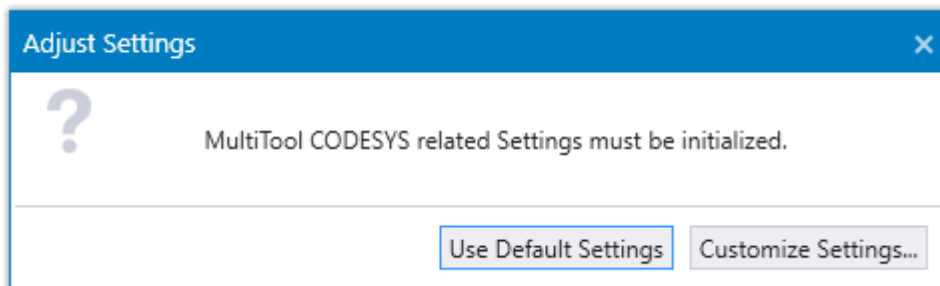
**SDK 2.9 or newer**

## Contents

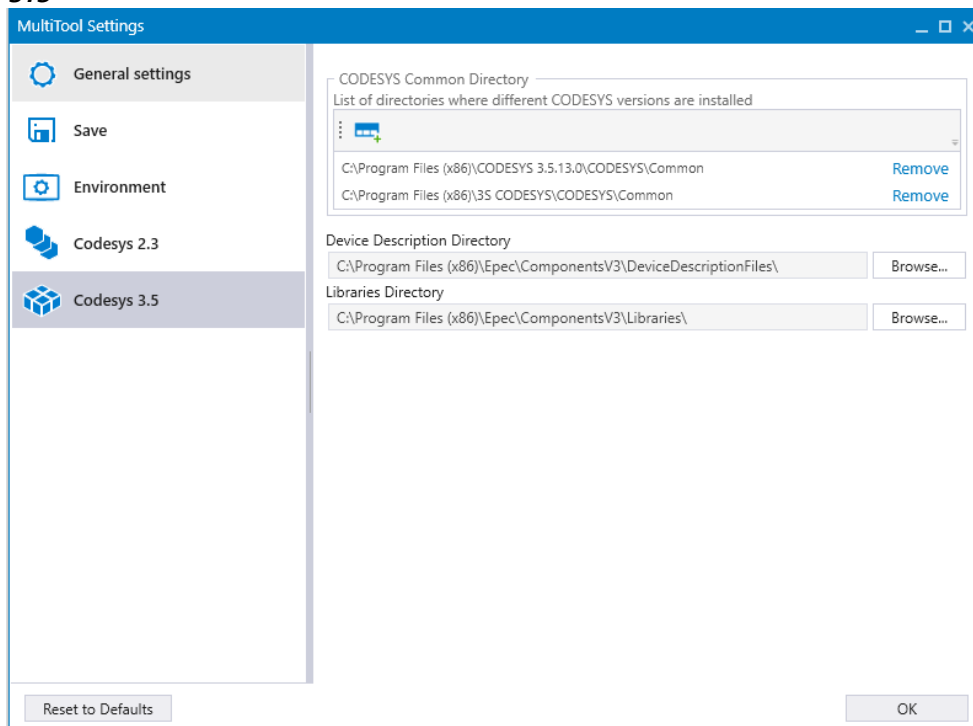
1. Upgrading CODESYS 3.5 SP6 project to CODESYS 3.5 SP13 (6000 series) .....	2
2. Updating CANVXD API library to 4.0.0.1 or newer .....	4

## 1. Upgrading CODESYS 3.5 SP6 project to CODESYS 3.5 SP13 (6000 series)

1. Install CODESYS 3.5 SP13 from Epec Extranet
2. Install SDK 3.1 from Epec Extranet
3. Open MultiTool 5.9
  - a. First time opening MultiTool version 5.9 there will be a pop-up about CODESYS related settings



- b. Select *Use Default Settings*
  - c. **It is important that CODESYS 3.5 SP13 is installed before the SDK 3.1**
4. To check that settings are correct, navigate to *FILE -> Settings -> Codesys 3.5*

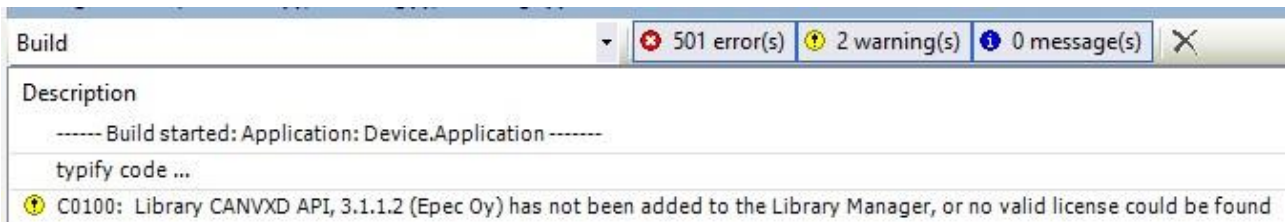


- a. If following CODESYS version directories are not seen, select *Reset to Defaults* from bottom-left corner

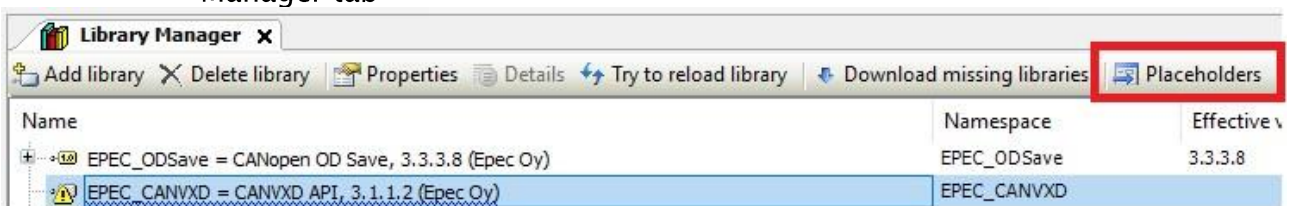


## 2. Updating CANVXD API library to 4.0.0.1 or newer

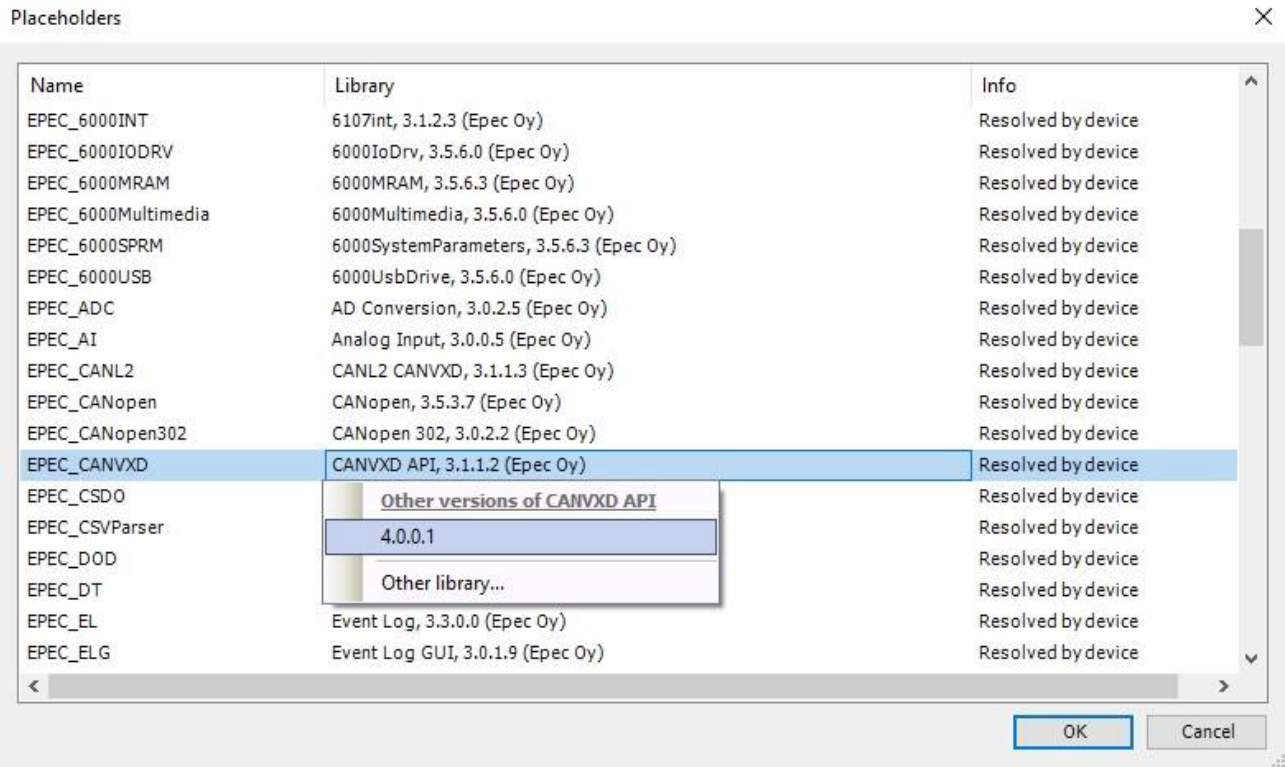
- SDK 2.9 includes a new version of the CAN VXD library. Installation of SDK 2.9 or newer
  - o removes the old CANVXD API version 3.1.1.2
  - o installs updated library version 4.0.0.1.
- Projects made with MultiTool version older than 5.7 require manual changes to compile, these changes are described in the following pages.
- When using MultiTool 5.7 or later, following device description versions are recommended.
  - o 6107 device description 1.2.0.6 or later
  - o 5050 device description 1.1.0.8 or later
  - o These device descriptions use the new CANVXD API version by default
- All S-Series device descriptions require the new CANVXD API.
- After installing SDK 2.9 or newer, CODESYS projects made with SDK 2.8 / MultiTool 5.6 or older will generate build errors/warnings about missing CANVXD API library:



- When CODESYS Library Manager is opened, effective version for CANVXD API is not defined
- Update the used version by selecting *Placeholders* menu from Library Manager tab



- Select EPEC\_CANVXD library version 4.0.0.1 from drop-down list from *Library* column



- Info column text will change to *Resolved by placeholder redirection* and show 4.0.0.1 as effective version.
- Project will now build without errors

